



Wage Manager Solution

Work with Multiple Employees, Payroll Wage Items, and Pay Rates.



Overview:

Business Owners/Payroll Administrators: Stop wasting your time updating pay rate changes one employee at a time.

Wage Manager Solution (WMS) utilizes your QuickBooks data to allow you to:

- Work with single or multiple payroll wage item types
- Modify pay rates for existing payroll items for multiple employees, all at the same time
- Copy an existing payroll item structure; creating rates for straight time, overtime, double time, etc. and assign the payroll item to multiple employees.

Sunburst Software Solutions, Inc.

2378 Dane Hill Road
W. Charleston, VT 05872

Phone: (888) 348-2877

Email: sales@sunburstss.com

Website: www.sunburstss.com



Key Features

Wage Manager Solution is the only wage management software for QuickBooks that allows you to add, modify, copy, or remove multiple payroll items or rates for multiple employees, all at the same time.

Wage Manager Solution

View visible log file during update	●
Fringe Benefit & Shift differentials	●
Modify, remove, add wage items	●
Reads QB Data to a convenient grid	●
Created Using Intuit SDK	●

Simplify your life.

Wage Manager Solution allows you to work with all employees, wage items, and pay rates, at the same time.

Trust your changes...

View a visible log file as new information is written back to the employee records in QuickBooks.

Key Benefits:

- Stop wasting valuable time updating individual employee records when a new payroll wage item is added or a pay increase happens.
- Streamline the wage rate modification process
- Allows for fringe benefit and shift differential calculations
- Work with single or multiple payroll wage item types - i.e. only Hourly Rates, Commissions, Salary items or any combination of the above
- Copy an existing payroll structure; creating items for straight time, overtime, double time, and triple time all at the same time and assign the new payroll item to multiple employees
- Remove obsolete payroll items from multiple employee records all at the same time
- Increase or decrease existing rates of pay by a specific dollar amount, a percentage, or set the rate to be a fixed rate of pay
- Licensed to your company; so Accountants and ProAdvisors can work with multiple files

Our products and QuickBooks Financial Software work together to help simplify your financial management. QuickBooks Financial Software gives you the power to manage your business more effectively by providing you with fast, easy, and integrated solutions to meet the needs of your business.

QuickBooks and the QuickBooks logo are trademarks of Intuit Inc., displayed with permission.

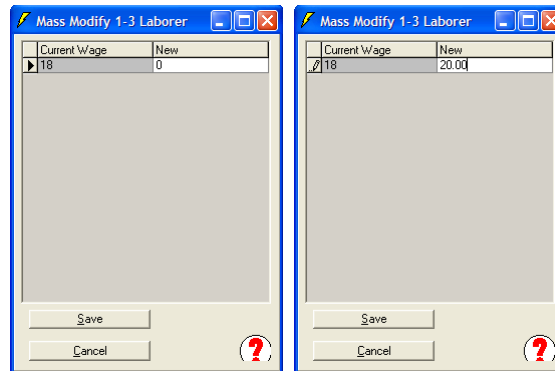


Wage Manager Solution (WMS), allows you to import and view QuickBooks Employees, the payroll wage items, and the pay rates that are currently assigned to them in a convenient spreadsheet type layout. After this information is in WMS, you can create new Payroll Items and Pay Rates; modify existing payroll items with new rates; or remove obsolete payroll items assigning the changes to one or multiple employees within the grid; writing the information back to QuickBooks with the click of a button.

See all your employees and wages in a grid like this:

Employee	100 Clerical	1-1 App Lab 50%	1-2 App Lab OT	1-3 Laborer	1-4 Laborer OT
Apprentice, Any L		9.5	11.25		
Apprentice, Robert L		9.5	11.25		
Bookkeeper, Betty A	17				
Bulldozer, Benjamin J					
Crane, Reginald A					
Equipment, Fredrick F					
Equipment, John J					
Laborer, Jackson B				18	24
Laborer, Laura B				18	24
Laborer, Lawrence M				18	24
Laborer, Leonard A				18	24
Mason, Mark L					
Supervisor, Sam L					
Trucker, Tammi T					

Click Modify and Change ALL of the rates for that column



Choose Save; and Poof all the wages are saved!

Employee	100 Clerical	1-1 App Lab 50%	1-2 App Lab OT	1-3 Laborer	1-4 Laborer OT
Apprentice, Any L		9.5	11.25		
Apprentice, Robert L		9.5	11.25		
Bookkeeper, Betty A	17				
Bulldozer, Benjamin J					
Crane, Reginald A					
Equipment, Fredrick F					
Equipment, John J					
Laborer, Jackson B				20	24
Laborer, Laura B				20	24
Laborer, Lawrence M				20	24
Laborer, Leonard A				20	24
Mason, Mark L					
Supervisor, Sam L					
Trucker, Tammi T					

System Requirements

You'll need the following in order to run WMS:
Hardware Requirements:

- Intel Pentium-class machine (Pentium II or III)
- 128 or 256+ megabytes of RAM for large companies
- 25 megabytes of disk space for program

Software Requirements:

- Windows Vista, Server 2003, XP, or 2000
- QuickBooks Pro/Premier 2005 - Current; or QuickBooks Enterprise Solutions 5.0 - Current

*See website for complete Technical Specifications.

User Comments

"...Awesome program..."

"Wow...I REALLY Like this!!! Easy, simple, does the job, intuitive. The import is even more exciting!"

*Roxanne Brown, Certified QuickBooks ProAdvisor
Professional Business Solutions 4U, LLC*

Free Trial

A FREE Trial is available upon request from
<http://www.sunburstss.com/trial.htm>

Questions? Contact us at (888) 348-2877

